



Certificate Installation Guide

Central IT – ISG
Jan 31, 2011

Version Control:

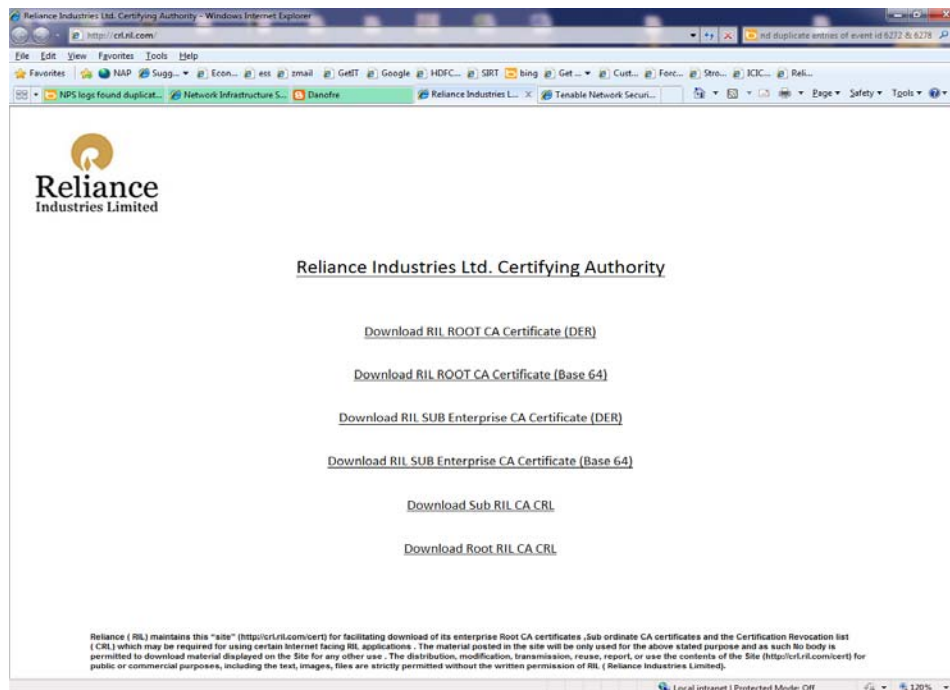
Document Name		Certificate Installation Procedure		
Document Version		1.0		
Document Version Date		Jan 31, 2011		
Prepared By		Central IT - ISG		
Reviewed & Approved By		Central IT		
Document Change Control				
Version Number	Change Description	Date	Change Author	Change Approver

Table of Contents

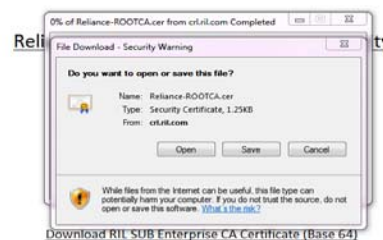
1.0	RIL CA CERTIFICATE INSTALLATION PROCEDURE	4
2.0	RIL CA CERTIFICATES VERIFICATION PROCEDURE	8

1.0 RIL CA Certificate Installation Procedure

1. Go to website <http://crl.ril.com>



2. Click on Download RIL ROOT CA Certificate (DER) and Open to install.

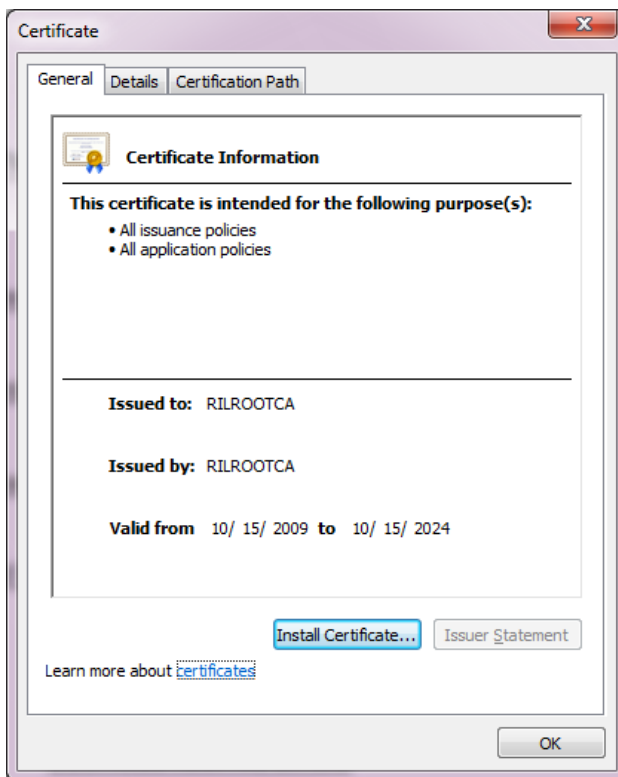


[Download Sub RIL CA CRL](#)

[Download Root RIL CA CRL](#)

Reliance (RIL) maintains this "site" (<http://crl.ril.com/cert>) for facilitating download of its enterprise Root CA certificates, sub-ordinate CA certificates and the Certification Revocation list (CRL) which may be required for using certain Internet facing RIL applications. The material posted in the site will be only used for the above stated purpose and as such no body is permitted to download material displayed on the Site for any other use. The distribution, modification, transmission, reuse, report, or use the contents of the Site (<http://crl.ril.com/cert>) for public or commercial purposes, including the text, images, files are strictly permitted without the written permission of RIL (Reliance Industries Limited).

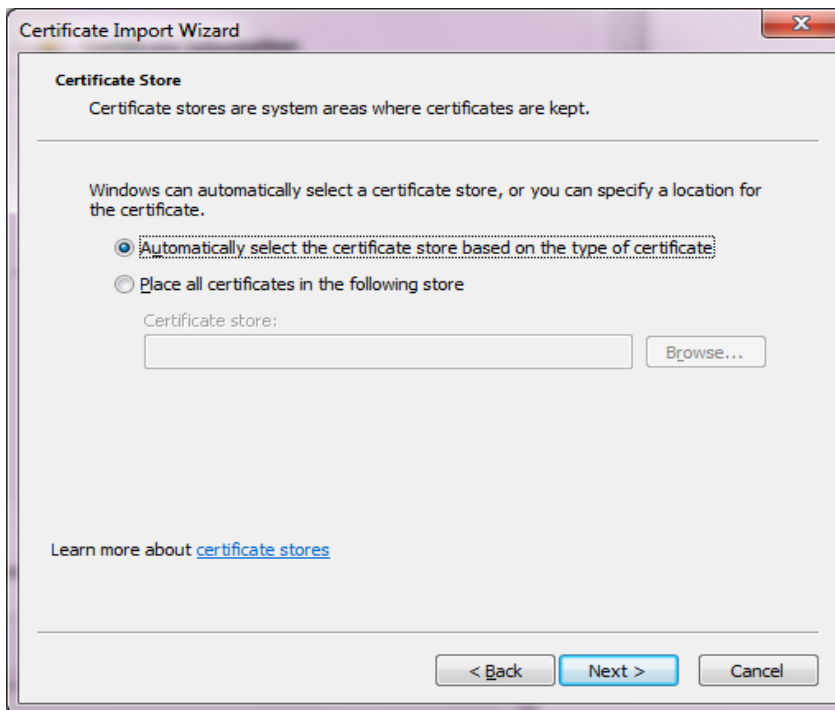
3. Click to Install Certificate.



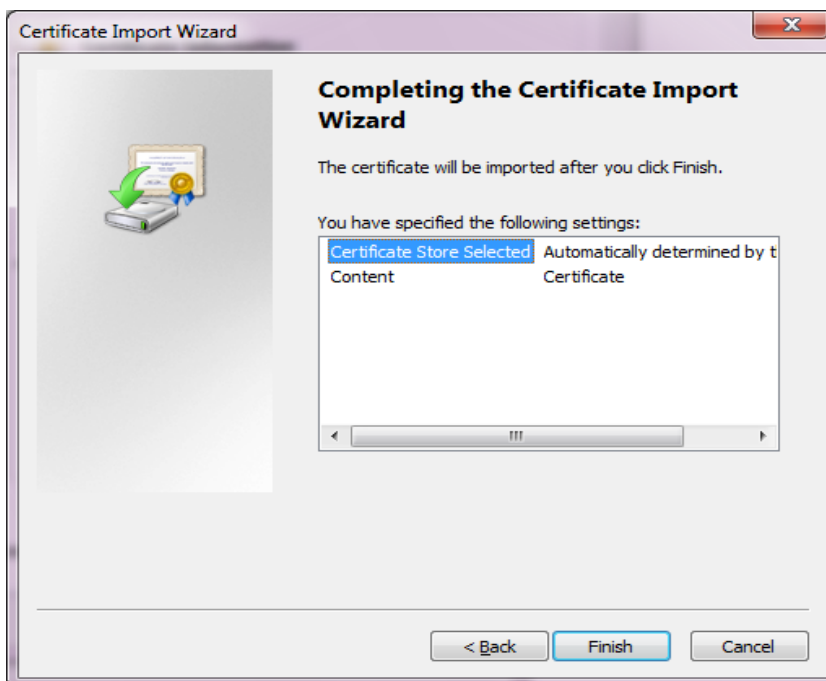
4. Click on Next



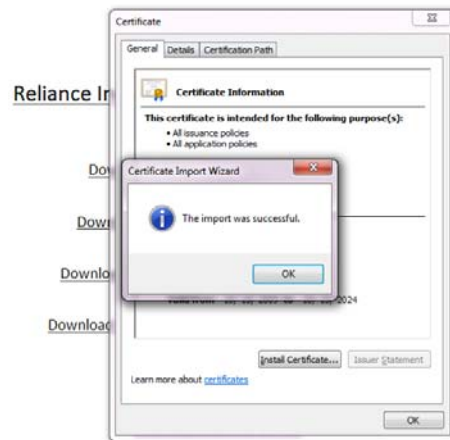
5. Click on Next.



6. Click to Finish.



7. Click OK to complete the installation of Certificate.



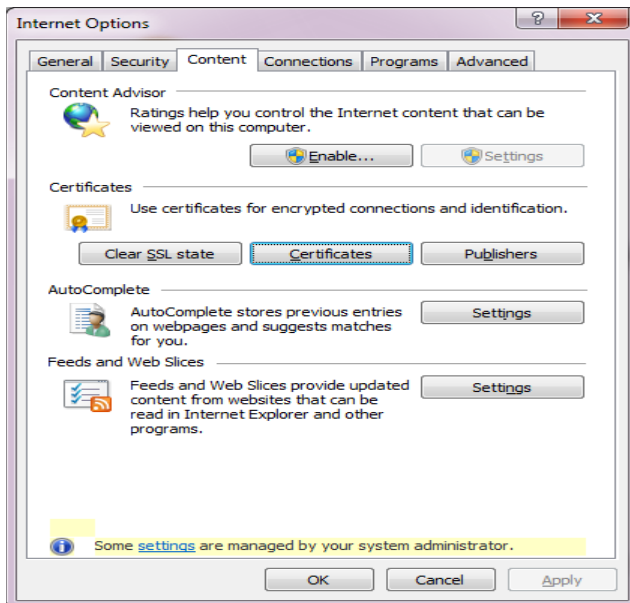
Reliance (RIL) maintains this "site" (<http://crl.ril.com/cert>) for facilitating download of its enterprise Root CA certificates , Sub ordinate CA certificates and the Certification Revocation list (CRL) which may be required for using certain Internet facing RIL applications . The material posted in the site will be only used for the above stated purpose and as such no body is permitted to download material displayed on the Site for any other use . The distribution, modification, transmission, reuse, report, or use the contents of the Site (<http://crl.ril.com/cert>) for public or commercial purposes, including the text, images, files are strictly permitted without the written permission of RIL (Reliance Industries Limited).

Repeat the installation steps from 2 to 7 for installing Download RIL SUB Enterprise CA Certificate (DER) from site <http://crl.ril.com>

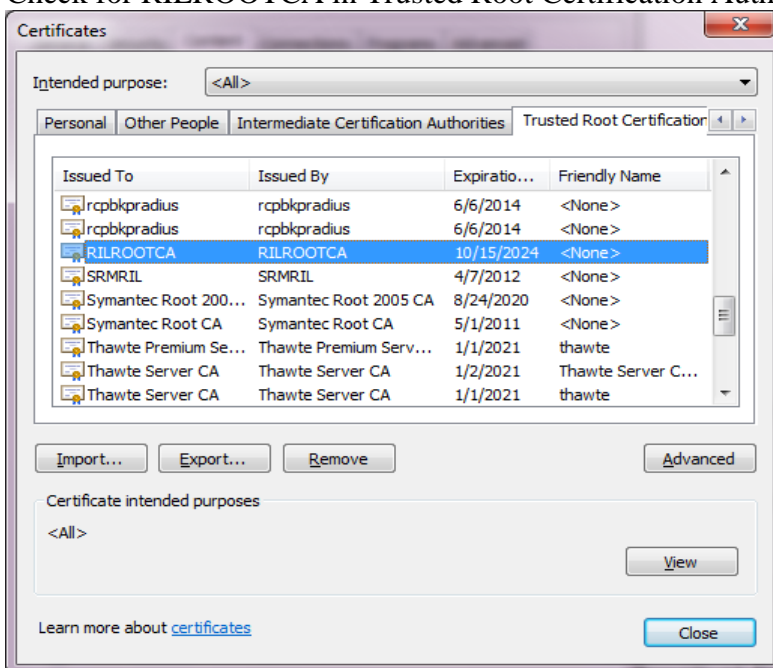
2.0 RIL CA Certificates Verification Procedure

Go to website <http://crl.ril.com>

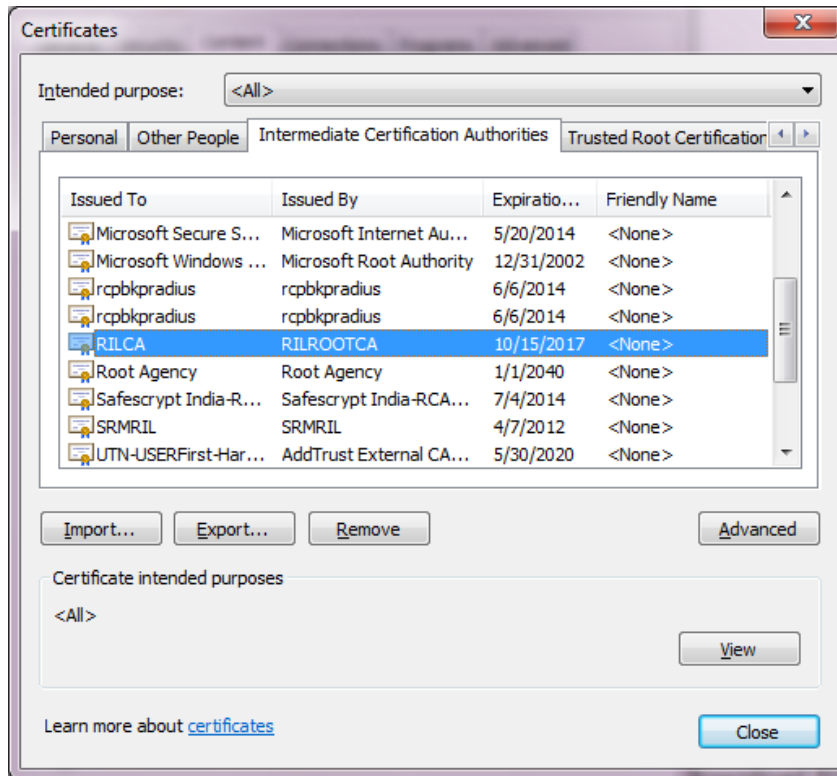
Open Internet Explorer → Go to Tools → Internet Options → Click on Content → Certificates Tab.



Check for RILROOTCA in Trusted Root Certification Authorities as shown below.



Check for RILCA in Intermediate Certification Authorities as shown below.



This shows that both the certificates are successfully installed.